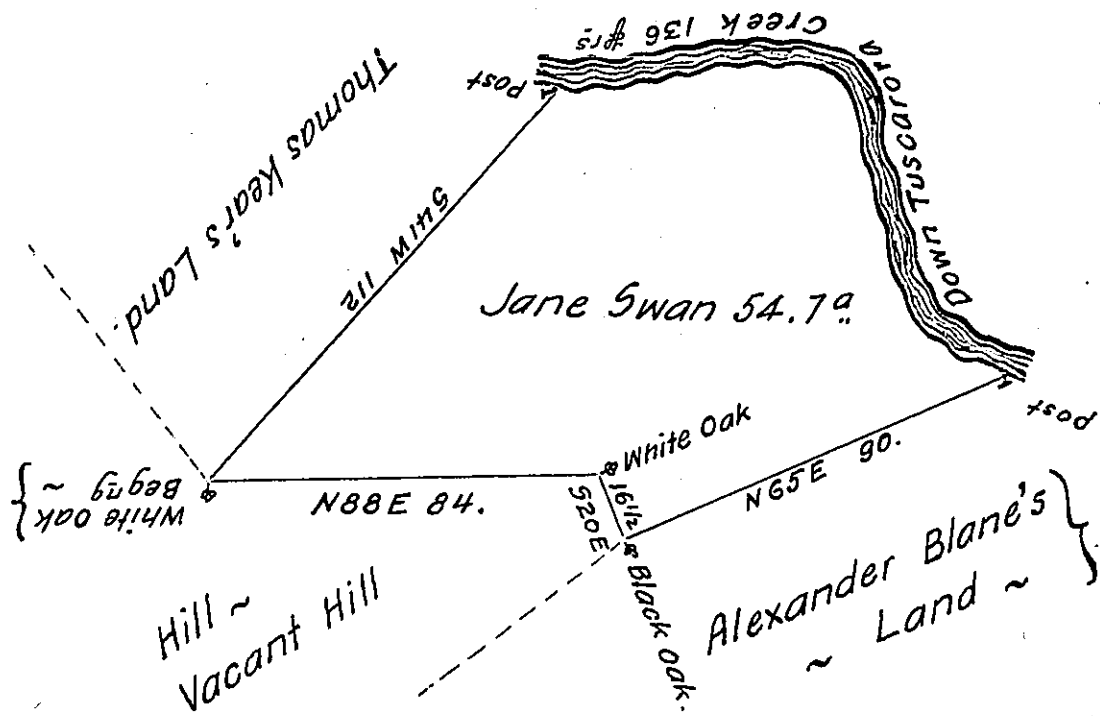


The Courses Down
the Creek are ~ }
N 64 W 22 Perches
N 18 W 52 ~ ~
West 62 ~ ~
In all 136 #rs.



The Draught of a Tract of Land called _____ Situate on Tuscarora
Creek in Cumberland County containing Fifty four Acres and one Hundred
and twenty six Perches with the usual allowance of Six Acres #rs. Cent for
Roads Surveyed the 6th Day of June Anno. Dom. 1767 in Pursuance of a
Warrant from the Honble. the Proprietaries to Jane Swan bearing date at
Philad^a the 25th day of March Anno Domini 1763 ~

To John Lukens Esq^r. S.G. } # W^m Maclay ~
of the Province of Pennsylvania }

now Mifflin Coj.

IN TESTIMONY that the above is a copy of the original remaining on file in
the Department of Internal Affairs of Pennsylvania, made
conformably to an Act of Assembly approved the 16th day of
February, 1833, I have hereunto set my Hand and caused
the Seal of said Department to be affixed at Harrisburg,
this tenth day of December 1906

Isaac R. Brown
Secretary of Internal Affairs.